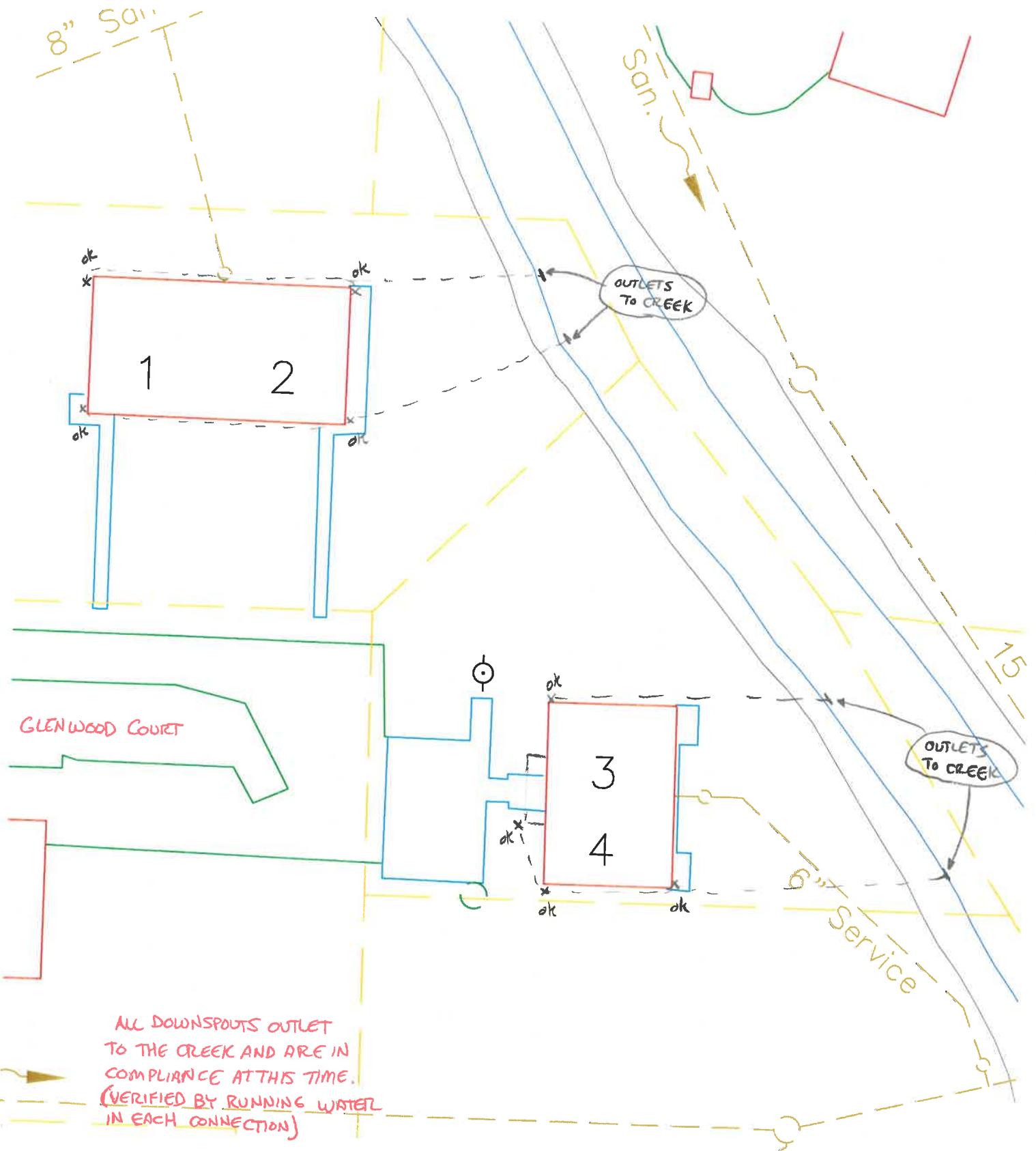


1,2,3+4 GLENWOOD COURT
ILLEGAL DOWNSPOT INVESTIGATION

2015

INSPECTED BY: MARK SPIESS



ALL DOWNSPOTS OUTLET
TO THE CREEK AND ARE IN
COMPLIANCE AT THIS TIME.
(VERIFIED BY RUNNING WATER
IN EACH CONNECTION)